

# Planning for the Future in Light of the Present and Past

Elmira Catholic Parishes

October 27, 2010

# Goal of Pastoral Planning

To create, sustain, and/or increase the vitality of parishes and faith communities

“Learn from the past, live in the present, plan for the future”

- Focus on the mission of the church
- Accurate picture of the present
- Analysis and reflection: “no one of us is as smart as all of us”
- Prayer, discernment of God’s invitation
- Faith, trust, courage in planning for the future

# Our Foundation in Faith

- “For I know well the plans I have in mind for you, says the Lord, plans for your welfare, not for woe! Plans to give you a future full of hope.” (Jeremiah 29:11)
- “And, behold, I am with you always, until the end of the age.” (Matthew 28:20)

- The City of Elmira
- The Elmira Catholic Parishes
- Holy Family Schools

# Elmira Demographics

## Population

- 48,799 total
- Decreased 11.9% (6,610) since 1990
- Projected to decrease by 3% (1,473) by 2015

# Elmira Demographics

## Diversity

- Anglo 85% (US 65%)
- African-American 9% (US 12%)
- Hispanic 3% (US 16%)
- Asian 1% (US 4%)
- Other 3% (US 3%)
- Hispanics/Latinos projected to increase by 7.5% by 2015

# Elmira Demographics

## Lifestyle Diversity

- 3% affluent families (US 15%)
- 37% middle American families (US 31%)
- 12% young and coming (US 15%)
- 7% rural families (US 13%)
- 13% senior life (US 7%)

# Elmira Demographics

## Age Diversity

- 11% ages 0 to 8 (US 12%)
- 28% ages 9 to 28 (US 27%)
- 28% ages 29 to 49 (US 29%)
- 20% ages 50 to 67 (US 21%)
- 11% ages 68-85 (US 9%)
- 2% ages 86+ (US 2%)

# Elmira Demographics

## Family structures

- 31% single (never married) – US 27%
- 20% divorced or widowed – US 16%
- 50% married – US 57%
- 33% of households with children are led by single mothers, 9% by single fathers, 56% by married couples

# Elmira Demographics

## **Household concerns** (exceeding national average)

- Adequate food
- Day-to-day financial worries
- Affordable housing
- Health insurance
- Better quality healthcare
- Employment opportunities
- Most significant overall category: the basics

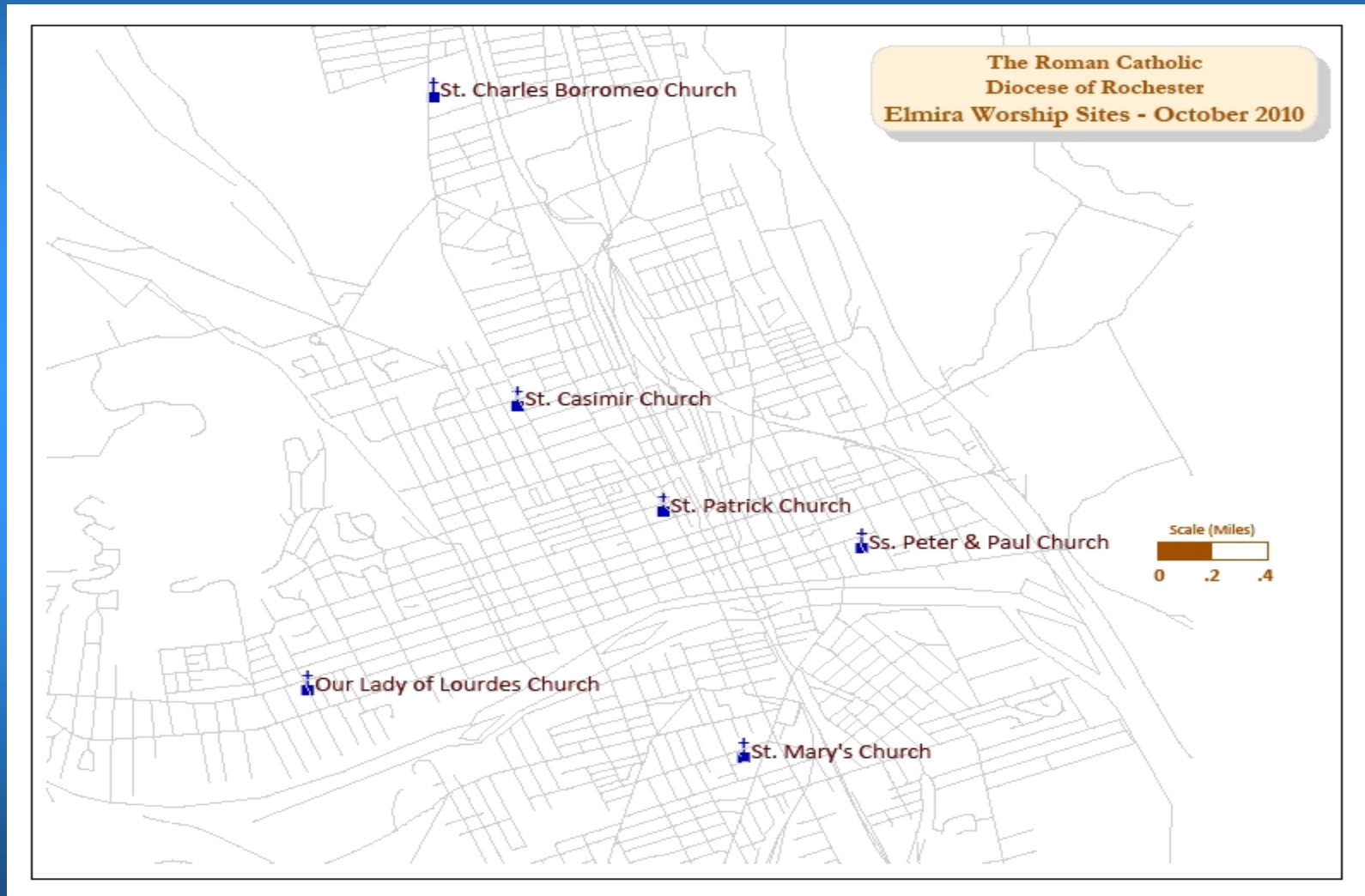
# Elmira Demographics

## **Preferred church programs**

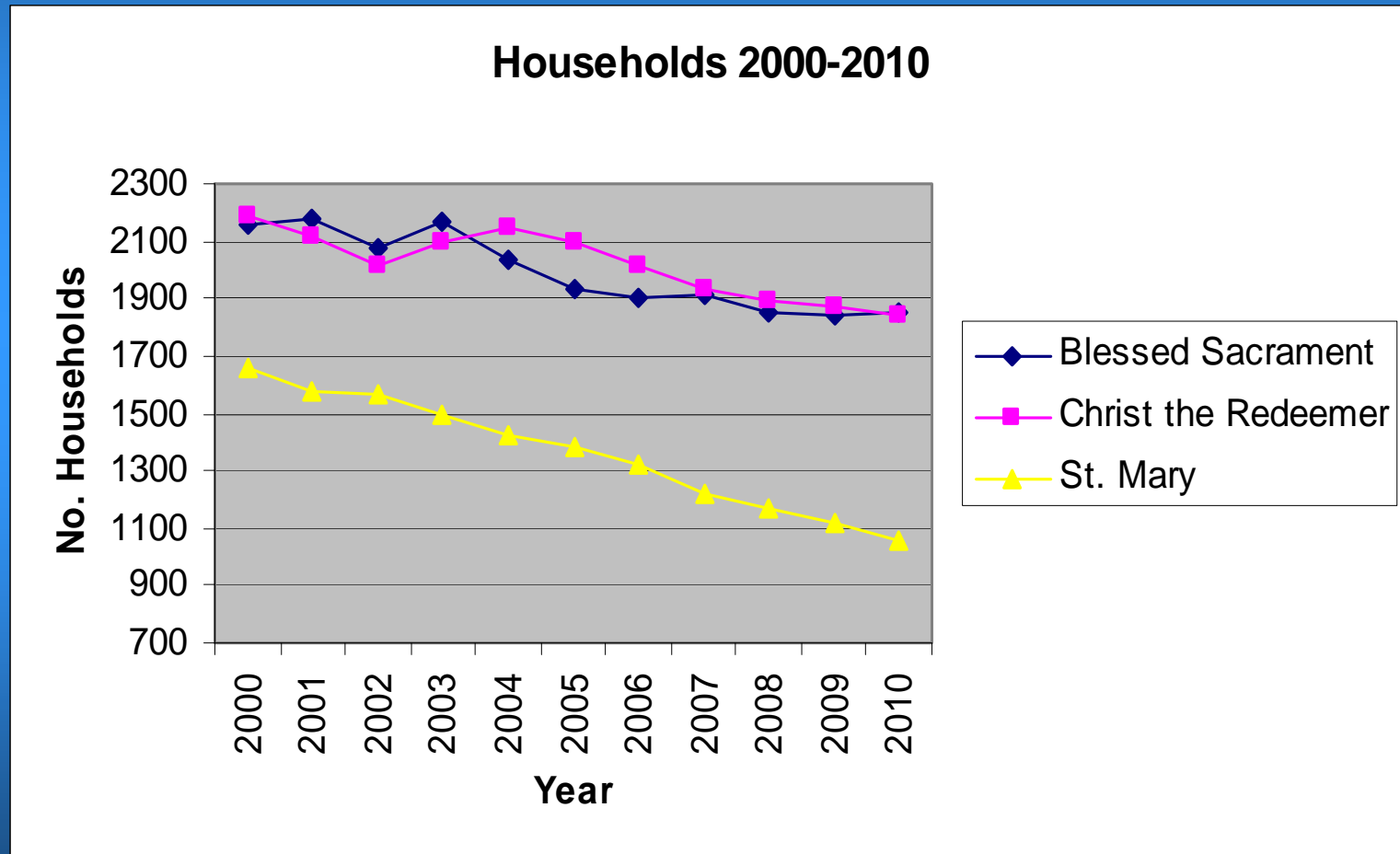
- Food pantry/clothing resources
- Care for the terminally ill
- Twelve-step programs
- Daycare services
- Overall: community/social services

- The City of Elmira
- The Elmira Catholic Parishes
- Holy Family Schools

# Catholic Churches in Elmira



# Elmira Catholic Parishes: Households

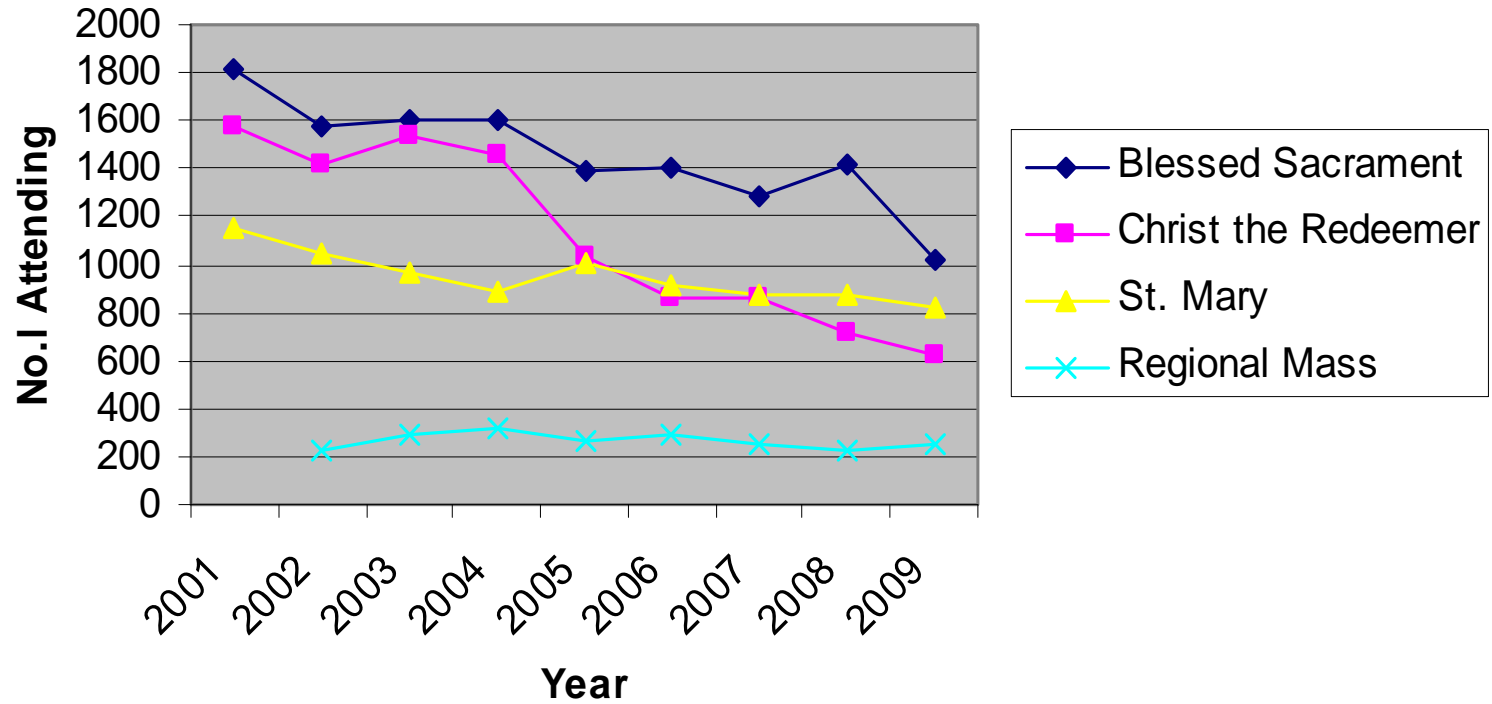


# % Household Change 2000-2010

- Blessed Sacrament: -14% (2155 to 1853)
- Christ the Redeemer: -15.5% (2184 to 1844)
- St. Mary: -36% (1656 to 1056)

# Elmira Catholic Parishes

## October Mass Attendance 2001-2009



# % Mass Attendance Change 2001-2009

- Blessed Sacrament: -44% (1819 to 1021)
- Christ the Redeemer: -60% (1570 to 627)
- St. Mary: -28.5% (1150 to 822)
- Sunday evening regional Mass: +7% (230 to 247)
- Diocese -29.5% 2000-2009

# Elmira Catholic Parishes: Baptisms

- Blessed Sacrament: 63
- Christ the Redeemer: 29
- St. Mary: 43
- 2008-2009 range in diocese 1-136

# Elmira Catholic Parishes: Marriages

- Blessed Sacrament: 19
- Christ the Redeemer: 10
- St. Mary: 11
- 2008-2009 range in diocese 0-46

# Elmira Catholic Parishes: Funerals

- Blessed Sacrament: 74
- Christ the Redeemer: 40
- St. Mary: 45
- 2008-2009 range in diocese 0-123

# Elmira Catholic Parishes: Baptism to Funeral Ratio

- Blessed Sacrament: 63:74
- Christ the Redeemer: 29:40
- St. Mary: 43:45

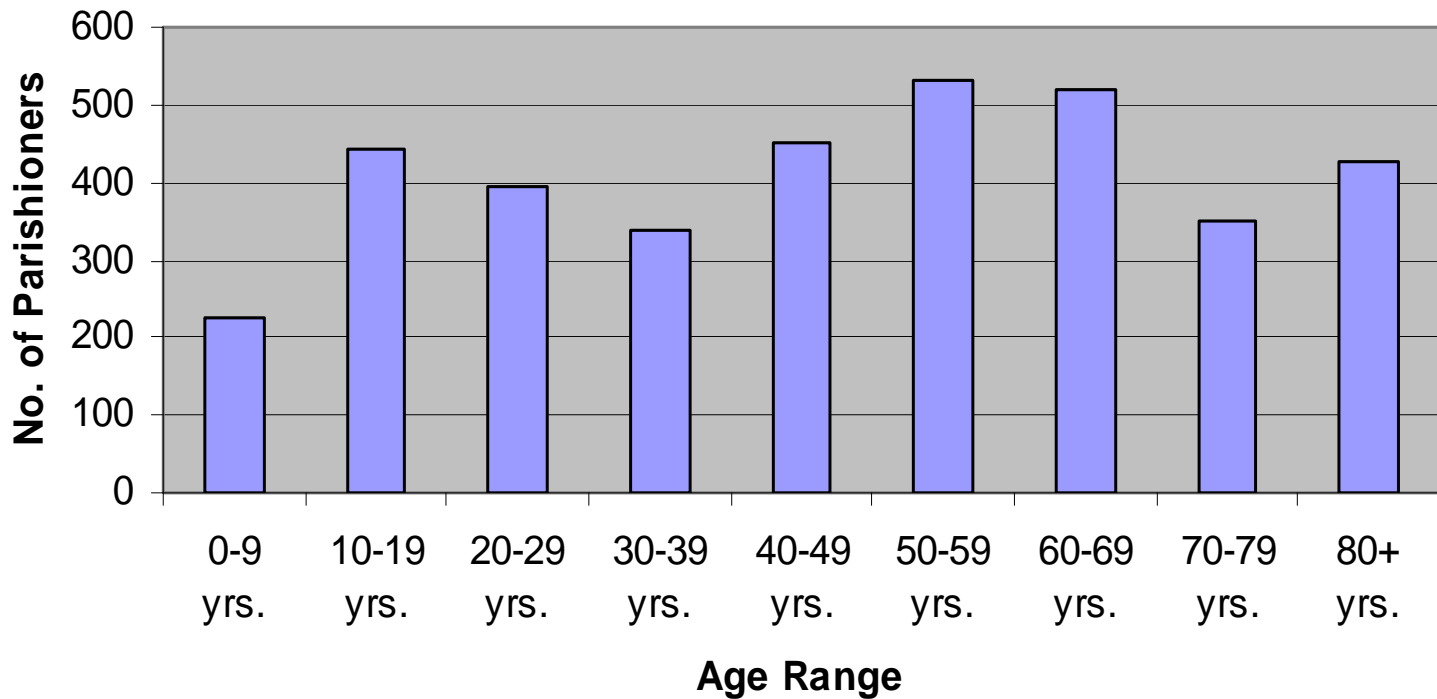
# Elmira Catholic Parishes: Age Distribution of Parishioners

Consider:

- Which groups are largest in your parish?
- What ministries are directed toward each age segment?
- Who is underserved?
- Who is under-involved in ministry?

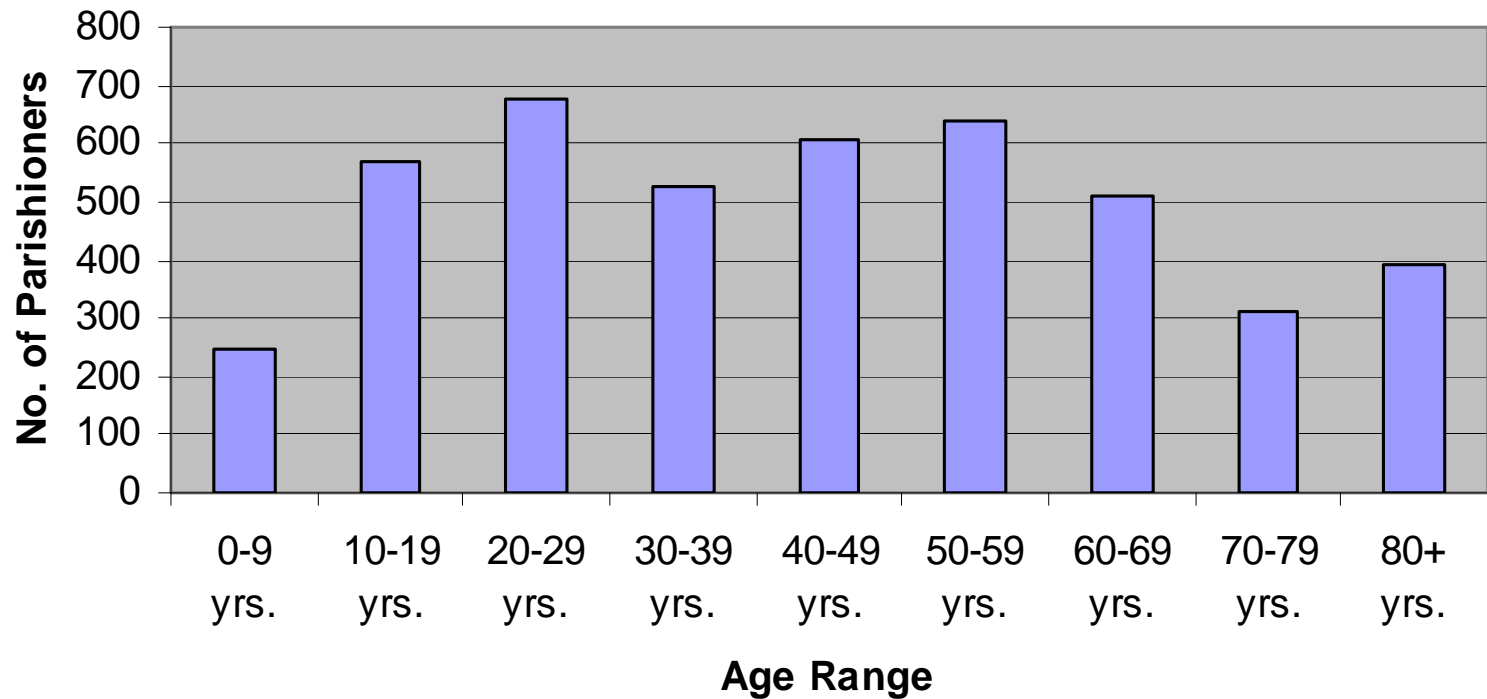
# Blessed Sacrament

**Distribution of Parishioners by Age**



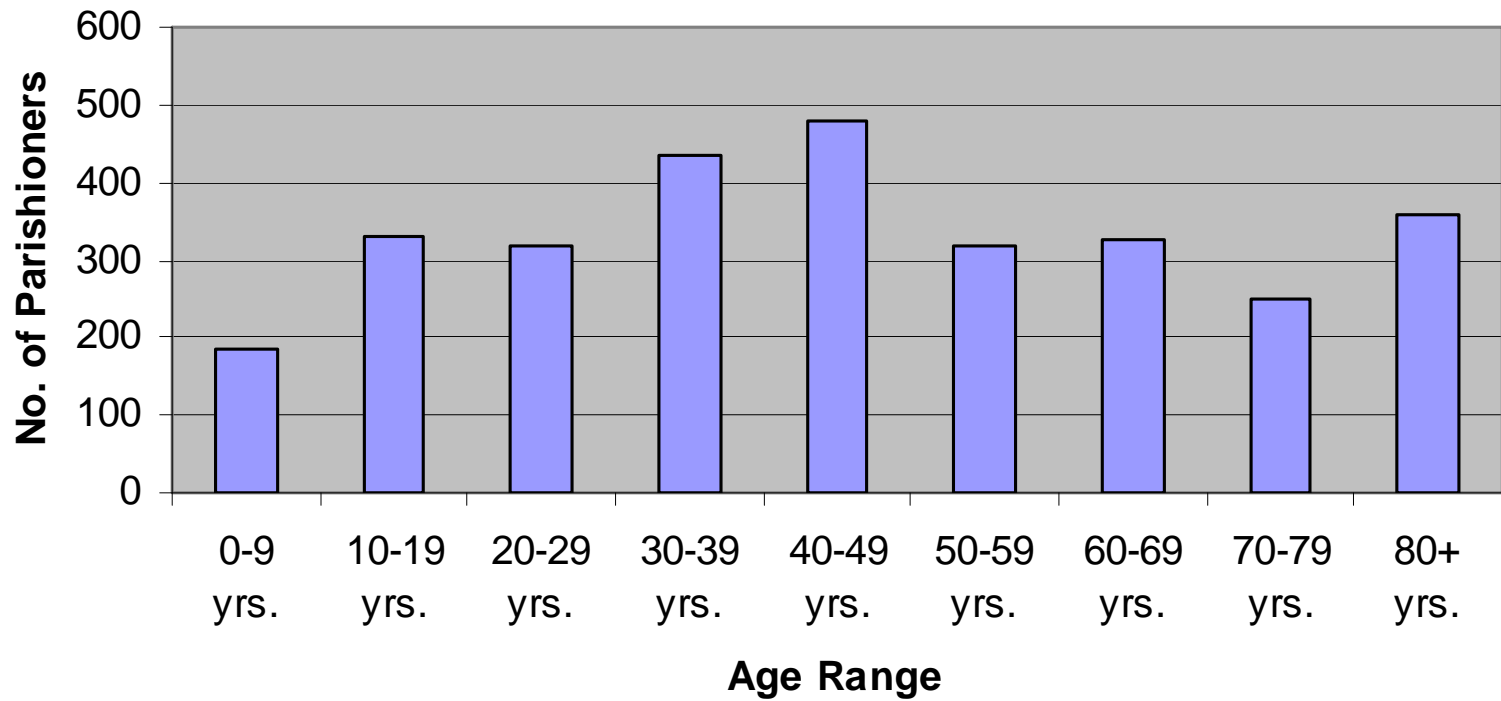
# Christ the Redeemer

Distribution of Parishioners by Age



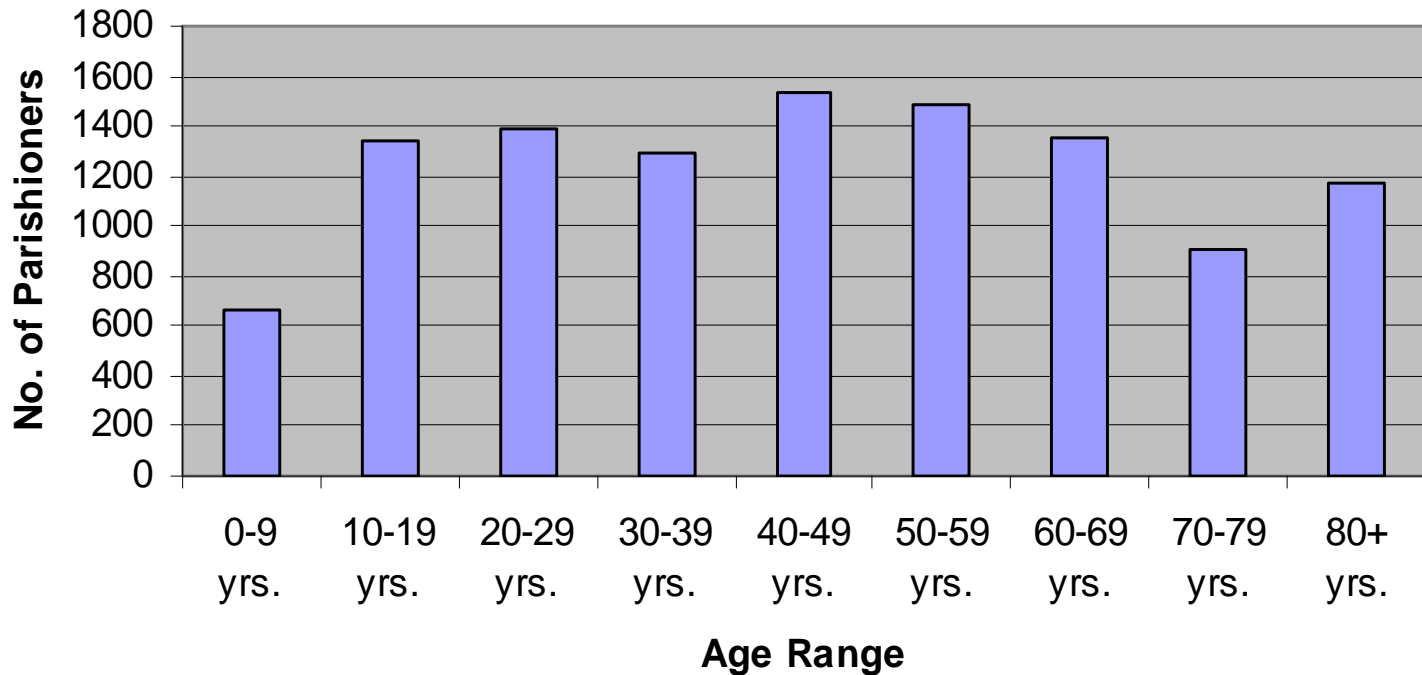
# St. Mary

**Distribution of Parishioners by Age**



# Elmira Catholic Parishes

**Total Distribution of Parishioners by Age**



# Elmira Catholic Parishes: Finances

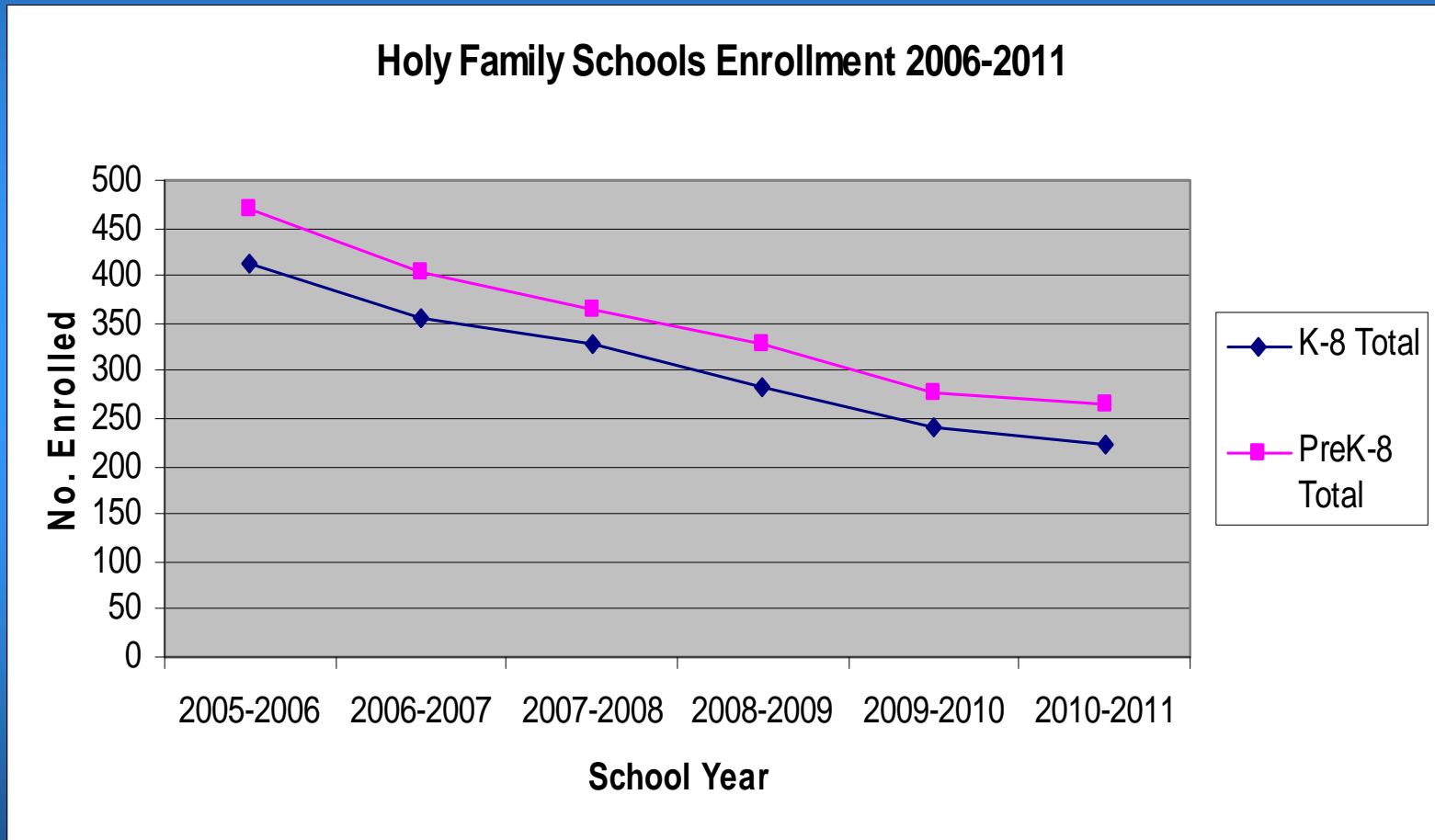
- For all three parishes operating revenue has been decreasing over the past 3 fiscal years
- Expenses for the same time period have been contained or have decreased
- Parishes still experienced a net operating loss
- This trend over time will result in the depletion of the parishes' assets

# Elmira Catholic Parishes: Finances

- For all 3 parishes, total assets for the fiscal year 2009-2010 have decreased in comparison to 2007-2008

- The City of Elmira
- The Elmira Catholic Parishes
- Holy Family Schools

# Enrollment in Holy Family Schools



# Enrollment in Holy Family Schools

- Over the past 5 years enrollment (kindergarten – grade 8) has decreased 46% (414 to 222)
- Over the past 5 years enrollment (pre-kindergarten – grade 8) has decreased 44% (470 to 264)

# Additional Information from the Holy Family Schools

BREAK

# Discussion

- Introduction: Fr. Scott Kubinski
- Questions
- Clarifications
- Additional information needed

Next Steps?

# Contact Information

Karen Rinefierd

Liaison from the Office of Pastoral Planning

1150 Buffalo Road

Rochester, NY 14624

800-388-7177 x1255

[krinefierd@dor.org](mailto:krinefierd@dor.org)